

# iRV Technologies

## Operation Manual

AM/FM/CD/DVD/Blu-ray/MP3/MP4  
Digital 5.1 Surround Sound-Optical SPDIF Audio Input



iRV 70

# Contents

Safety Guidelines	
Important safety instructions	
Safety compliance	2
Warnings	2
iRV technologies	3
iRV 70 Features	5
Radio Operation	8
BD/DVD/MP3/MP4 Operation	10
BT Syncing	10
App Operation	11
Remote Control Guide	12
System Setup	15
Lanugage	15
Audio	16
Speaker setup	16
Wiring Diagram	17
Troubleshooting	18
iRV 70 Specifications	19



**WARNING** - To reduce the risk of electrical shock, do not remove cover (or open unit). **NO USER SERVICEABLE** parts are inside. Refer servicing to **QUALIFIED SERVICE PERSONNEL**.

The design and manufacture of this player takes personal safety into consideration. However, any improper operation may result in electric shock, fire, or other hazard.

**DO NOT** open the cabinet by yourself to prevent electric shock. Please contact a professional technician to preform any service needed. Please use only components recommended by factory when replacement is necessary.

Please turn unit off when not in use. Use a dry, soft cloth to clean face with the system turned off.

**PRECAUTION** - Moisture may cause the lens on loader in this unit to malfunction. To remedy the problem, turn unit on, eject disc and run 1-2 hours to vaporize moisture inside the unit. Do not repeatedly turn unit off and on. After turning unit off wait 10 seconds before turning on again. Do not use broken, scratched, or twisted discs in player. This could result in damage to the unit. Use only 5", 12cm discs in this unit.

# iRV Technologies

## iRV 70

### CD/MP3/MP4/DVD/BD Disc Player

Compatible with standard size CD,mp3,mp4,DVD and BD discs (4.75' or 12cm).The iRV 70 is designed to read standard BD,DVD, MP3,MP4,CD,CD-R,CD-RW,JPEG-CD Disc.Because of variations in recording methods some discs may not play on this unit. This unit will play region 1 DVD's(USA and Canada).

### 5V CHARGE

This is NOT a USB port and CANNOT accept a flash drive for music playback.Only uses on 5V charging,also charges many devices like iPod.

### Built-In AM/FM Tuner

18 preset FM stations and 12 AM stations available to select.

### High Definition Input

2 High Definition input and 1 High Definition output.  
High Definition output with ARC function.

#### BT Link

This unit contains BT technology enabling secure, wireless connections between portable and fixed devices.

The iRV 70 BT link also enables handheld control of streaming music from users wireless device play list.

This unit supplies quality high power audio and video outputs to three different zones. Zone 1 receives 5.1 surround sound. Zone 2 receives standard stereo audio. Zone 3 has the function of independent control.

This unit has 1 AV in, 1 aAV out, 1 Aux in , 1 Digital/Optical input to allow users to enjoy entertainment from other sources such as Satellite Radio, VCR's, Digital Cameras, Video Game for iPods and MP3 Players.

These sources must be connected through the inputs on the unit or through additional accessory wall plates.

*\*NOTE: The Digital Optical input is used to enable digital audio from A/V components with digital optical output.*

#### Clock

Press this to see time. This function works in all modes and even when the unit is turned off. Press to change to the clock display. Press and hold to turn the display indication and button illumination off or on.

#### APP Control

This unit can be controlled by APP, Support iPhone 6S+ and Android 4.3+.

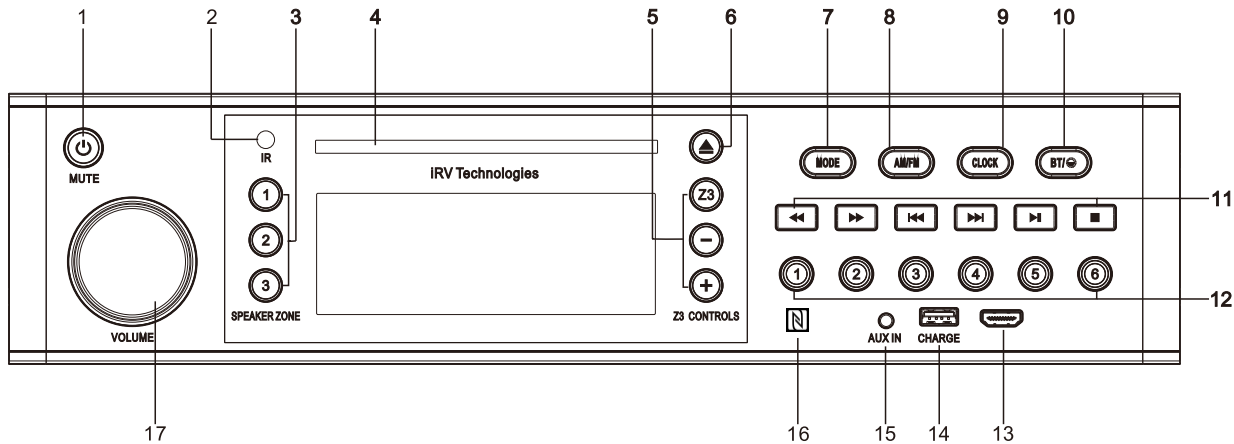
#### Consumer Electronics Control

This unit has consumer electronics control features, functions will vary based on TV connected. It allows user to use a remote control multiple support high-definition equipments, no need use other remote controls.

#### Near Field Communication

This unit has near field communication lable and can complete a quick BT pairing.

# iRV 70 FEATURES



# iRV 70 FEATURES

## 1 POWER

Turns the power on/off and make device mute.

Note: Push and hold the POWER button for 5 seconds to make the device on/off.

Quick Push can make the device mute.

## 2 IR

Infrared remote sensor.

## 3 ZONE 1, 2 and 3

Turns sound on or off in corresponding Zone 1, 2 and 3.

## 4 CD/MP3/MP4/DVD/BD Disc Player

Insert a disc to play. Compatible with standard size CD, MP3, MP4, DVD and BD discs (4.75" or 12cm). The unit is designed to read standard CD, MP3, MP4, DVD, DVD+R, DVD-R, BD Disc. Because of variations in recording methods some discs may not play on this unit. This unit will play region 1 DVD's (USA and Canada).

## 5 Z3 CONTROLS

Press "Z3" button, you can enter into/exit from Zone 3 operation menu. Press +/- button, you can increase/decrease Zone 3 volume.

Push and hold "Z3" button, you can change bass/treble/balance/EQ mode. In bass/treble/balance/EQ mode, adjust +/- button, you can increase/decrease for its value. Press "Z3" button, zone 3 will be independent. Blue status light will change into red.

## 6 EJECT

Press to eject a Disc from your iRV 70 built in player.

## 7 MODE

Select between Radio/BD/BT/AV IN/AUX IN /DOT-DCC IN/R-HDMI IN/F-HDMI IN/HDMI ARC.

## 8 CLOCK


Press this to see time. This function works in all modes and even when the unit is turned off. Press to change to the clock display. Press and hold to turn the display indication and button illumination off or on.

## 9 AM/FM

Allows you to select FM1, FM2, FM3, AM1, or AM2. Each band can be auto programmed with 6 station presets. 18 total preset stations for FM and 12 total preset stations for AM. (See FFWD or FRWD Radio Mode for auto scan features.)

## 10 BT/

Quick push this to enable BT connectivity.

Push and Hold  button can adjust 3 levels brightness for LCD and button backlight.

## 11

F. RWD  

# iRV 70 FEATURES

FWD and RWD buttons ◀◀ ▶▶

Radio Mode: Press to select next frequency, higher or lower.

BD Mode: Moves menu selection.

Radio Mode: Press to auto scan and memorize band preset stations. Scan through all lower preset stations.

BD Mode: Select different levels of fast reverse.

PLAY / PAUSE ▶||

Press to play disc or pause playback of disc.

During radio mode:(Auto-storage /Preset scan)

1) When press , the radio searches from the current frequency and checks the signal strength level until 6 station are found. And then the stations frequency are preset to the corresponding preset memory numbered

STOP ■

Press to stop playback of disc. Press Play to continue the

12 1-6

[1],[2]...[6] number buttons are used to enter number,e.g.No.of track,BD/DVD chapter No.,time data,etc.

13 High Definition Input

2 High Definition Input and 1 High Definition output. HighDefinition Input conection HighDefinition Input cable.

14 5V CHARGE

This is NOT a USB port and CANNOT accept a flash drive for music playback. Only uses on 5V charging, also charges many devices like iPod.

15 AUX IN

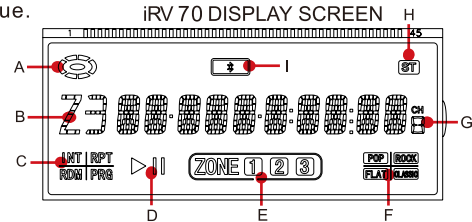
Analog audio input from Mp3 or iPod player,This is a 3.5mm input.

16 Near Field Communication

This unit has near field communication lable and can complete a quick BT pairing.

17 VOLUME

Increase or decrease the volume in all rooms where sound is being played,also can operate bass,treble balance and EQ value.



A Disc

B Z3 Playing status

C play mode

D Play/pause

E Zone speaker

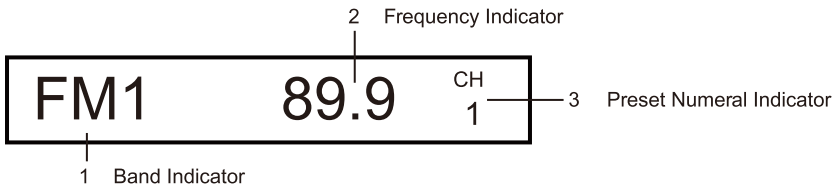
F EQ setting

G Frequency

H Stereo indicator

I BT indicator

# RADIO OPERATION



## POWER



Turns the power on and off.  
Make the device mute.

Push and hold for power "on and off"  
Quick push for power "mute"

## Radio Reception Mode



Press to access the radio, press to activate desired band: AM1, AM2, FM1, FM2, FM3.

Activate radio      Press for desired Band

## Manual Tuning



Select Band, Select single arrowed button to move the channels down or up.

Select Band      Channel Down      Channel Up

## Auto Search Tuning



Push to auto search for an available station at a higher or lower frequency. When this function is selected the unit will stay at the selected station until another function is selected.

Select Band      Auto Search Down      Auto Search Up



# RADIO OPERATION

## Manual Frequency Presets

Select Band, Select desired frequency, Hold desired numeral for 3 seconds. Frequency is set. Repeat to change. Frequency can be preset for AM1, AM2, FM1, FM2, FM3.



Select Band AM1, AM2, FM1, FM2, FM3      Select Frequency      Select Numeral

## Recall Frequency Presets

Select Band AM1, AM2, FM1, FM2, FM3, then select desired numeral



Select Band AM1, AM2, FM1, FM2, FM3      Select Numeral



## Automatic Store / Preset Scan

### A. Automatic Scan & Store

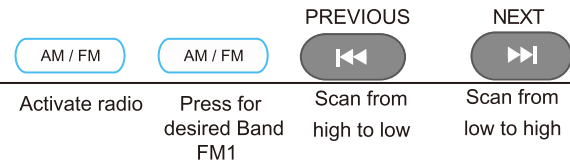
While listening to the Radio, Long press the “▶||” button, The receiver will automatically scan and save the station listening to.

### B. Scan Saved Stations

Short press the “▶||” button once to perform the scanning functions.

## Auto Best Station Memory

While in FM1 if you press the NEXT button the radio will start scanning from low to high frequencies.,or PREVIEW button the radio will start scanning from high to low frequencies. Each strong station found will be stored in a preset button until all 18 FM presets are full. You can also do this with the AM band. There are 12 presets available for the AM band.

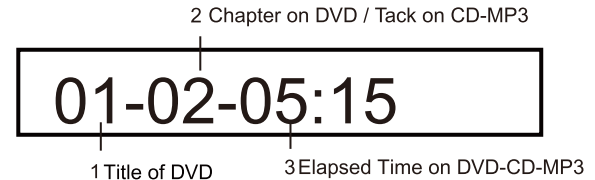


## Clock Setting the time

Press and hold the CLOCK button for 3 seconds. Hour will flash. Use the SELECT KNOB to set correct hour. Press SLECET button move to minutes. Minutes will flash. Use the SELECT KNOB to set correct minutes. Press the CLOCK button to memorize



## BD/DVD/CD/MP3/MP4 OPERATION



### Fast Reverse / Fast Forward

2X, 4X, 8X, 20X To select a normal speed, push the PLAY button.



F RWD

Push the Fast Rewiind button to rewind DVD



F FWD

Push the Fast Forward to advance the DVD button

### Previous / Next

Select previous or next track.



PREVIOUS



NEXT

## BT Link

Conect the iRV70 with a BT device

Turn on iRV70power,enter BT Link in your cell. Search "iRV70 BT", then clink "connect". It's successful to connect iRV70 BT if iRV70 screen shows "BT Link".



Press the "BT" button to enter setup



Enter a numeric PassKey

## APP OPERATION

---



On Your iPhone or iPad:

- Click on 'App Store'
- Click 'Search' at the bottom of the screen
- In the search bar, type iRV

\*If using iPad, make sure to click the 'iPhone apps' option



On Your Android Device:

- Click on 'Google Play'
- In the search bar, type iRV at the top of the screen



Watch video



Get the App



# REMOTE CONTROL Guide



## 1. Power

Turns the power on and off.

## 2. Eject

Push the button once, the disc will be ejected from the slot, press it again and the disc will be taken back into the slot.

## 3. 0-9 NUMBERS

**Radio Mode:** You can select one of the 9 stored stations on each band by pressing any one of the number buttons (1-6).

**Disc Mode:** You can select any track directly by using the number buttons (0-10+). Example: If you want track number 25. Consecutively press the number 2, then 5 and track number 25 will begin to play.

## 4. MENU-BD Only

Press to open a menu for disc.

## 5. TITLE-BD Only

Press to open POP Up/TITLE menu for disc.

## 6. MEDIA CENTER-BD Only

Press to Media Center.

## 7. HOME-BD Only

Press to open SYSTEM SETUP.

When playing bluray DISC, should push "STOP" first to stop playing, and push "HOME", then "SYSTEM SETUP" function can be pulled out.

## 8. NAVIGATION BUTTONS

Up/Down/Left/Right move Key s.

## REMOTE CONTROL Guide

### **9. ENTER**

Enter Key.

### **10. SRC**

Select between Radio/BD/BT/AV IN/AUX IN /DOT-DCC IN/R-HDMI IN/F-HDMI IN/HDMI ARC.

### **11. RETURN-BD Only**

Return to the Previous Menu.

### **12. PLAY/PAUSE**

Press PLAY/PAUSE button to suspend the playback of CD, MP3, MP4, DVD and BD media.

Press it again to return to normal playback mode.

### **13. PREVIOUS / NEXT**

**Radio Mode:** Press to select higher or lower stations.

**Disc Mode:** Press to select previous or Next track or chapter.

Pushing the Previous button, the unit will play the disc from the beginning of the previous track.

Pushing the Next button, the unit will play the disc from the beginning of the next track.

### **14. STOP**

BD, DVD, VCD, CD: Press STOP to suspend playback mode. STOP will display on the TV Screen.

Pressing STOP a second time will end all disc playback.

### **15. FAST REVERSE / FORWARD**

Press to select different levels of Fast Reverse or Fast Forward. Press Play to resume selection.

### **16. B.MARK-BD Only**

Display bookmark menu.

### **17. RES-BD Only**

Change the Output Resolution.

### **18. PROG.-BD Only**

Program Play.

### **19. AUDIO-BD Only**

Adjusts the surround sound mode as well as selects the language. Must be set before play.

### **20. ZOOM-BD Only**

Display Zoom in/out Key.

### **21. SUBT.(SUBTITLE)-BD Only**

Change Subtitle Key.

### **22. CLR-BD Only**

Press to clear an input error.

### **23. DISPLAY-BD Only**

Display files Information Key.

# REMOTE CONTROL Guide

## **24.VOLUME**

Press the VOLUME (+ or -) button to increase or decrease the volume level respectively.

## **25.MUTE**

Press the MUTE button to turn off the sound in all ZONE 1, 2 and 3. Press it again to resume the previous sound levels.

## **26.ZONE 1,2 and 3**

Turns sound on or off in the corresponding ZONE 1, 2 or 3.

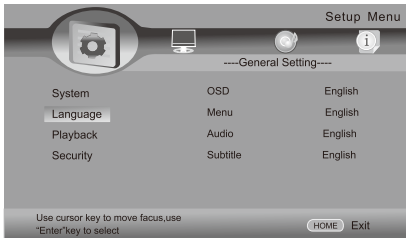
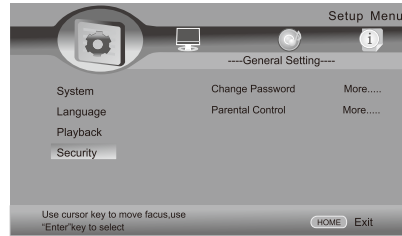
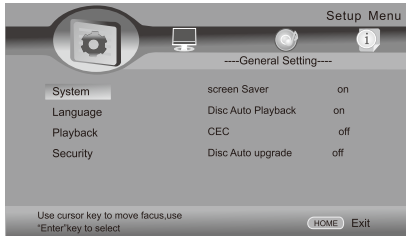
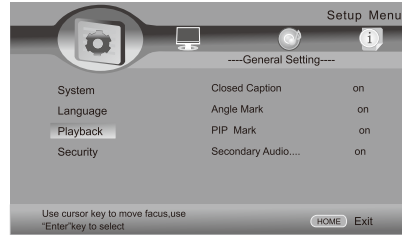
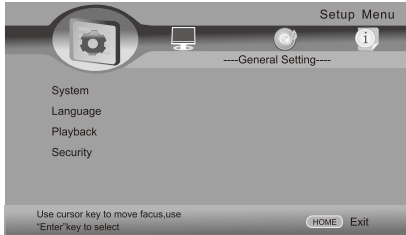
## **27.Z3 CONTROLS**

Press "Z3" button, you can enter into/text from Zone 3 operation menu. Press +/- button, you can increase /decrease Z3 volume.

Push and hold "Z3" button, you can change bass/treble /balance/EQ mode. In bass/treble/balance/EQ mode, adjust +/- button, you can increase/decrease for its value.

Press "Z3" button, zone 3 will be independent. Blue status light will change into red.

# SYSTEM SETUP



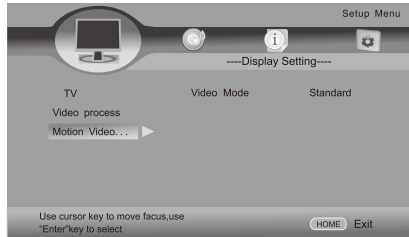
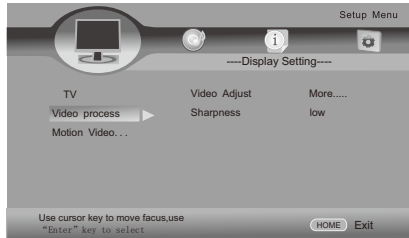
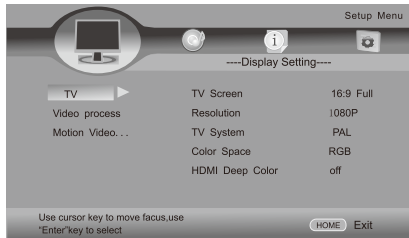
Press the "HOME" button to activate the Setup Menu on screen display Video Monitor Only menu.

Use the NAVIGATION buttons to navigate the following OSD menu options.

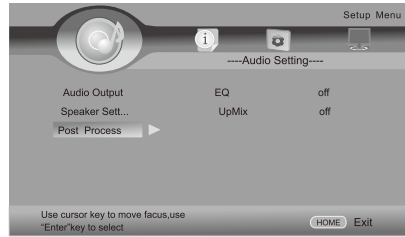
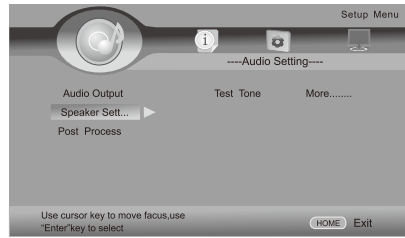
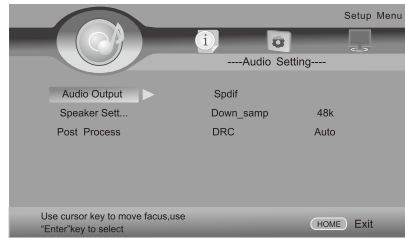
Change Password:  
Initial Users Password:0000

Parental Control:  
Initial Users Password:0000

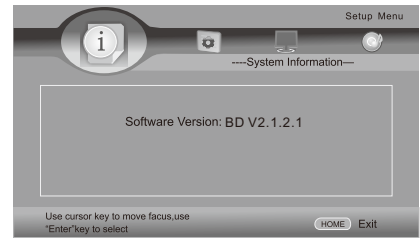
# Display Setup



# Audio Setup

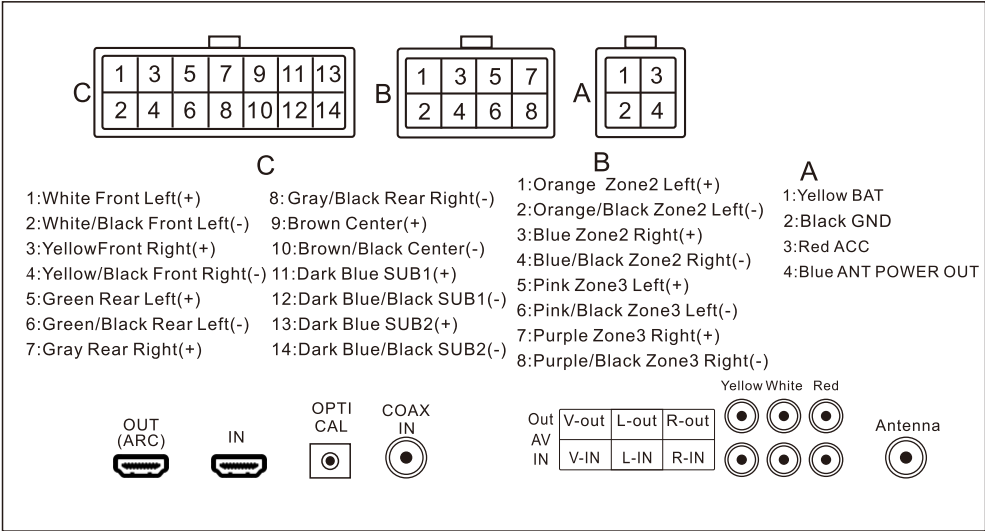


# System Information





# WIRING DIAGRAM



# TROUBLESHOOTING

## No Power

Check and make sure whether the fuse is blown, replace fuse with proper value if necessary.

Some errors occur in the LCD or no function when pressing the button.

Turn off the unit and restart the unit again. Use Factory Default Restart.

## Poor radio reception or static.

Antenna may not be the proper length. Make sure the antenna is fully extended. Antenna may be broken. Replace antenna.

The broadcast signal is too weak.

The antenna is poorly grounded. Check and make sure the antenna is properly grounded at it's mounting location.

## Disc cannot be loaded

Disc is loaded in the machine. Clear the disc by pressing eject

## No Picture.

The Video line from the main unit to the TV is not connected properly. Check connections.

Improper setting of the TV SYSTEM. Set the TV SYSTEM to "NTSC", according to the connected television.

## Disc error appears.

The disc may be damaged or dirty.  
Clean disc and retry.

## When there is no color on video.

Turn off the unit and restart the unit again.  
Use Factory Default Restart.

## FACTORY DEFAULT RESTART

Press and hold POWER button for 5 seconds - Unit will shut off. Restart unit by pressing the ON button. Factory defaults will be reset with this type of restart.

## NOTE:

If any of the problems persist after check list has been made, consult your nearest service dealer.  
Never attempt to disassemble your unit by yourself.

## iRV 70 SPECIFICATIONS

Overall Dimensions	17"(W)x4"(H)x7-7/8"(D)
Mounting Dimensions	15-3/8"(W)x3-1/2"(H)x6-1/2"(D)
Net Weight	5.5lbs(2.5kg)
Voltage	12V DC Negative Ground (11.0V - 15.0V allowable)
Maximum Current Consumption	9A
Total Continuous Power Output	50W
Load Impedance	4Ω (4-8Ω allowable)
Total harmonic distortion	Typical 0.02% Maximum 0.3%
DVD Deck Section, Discs Played	BD, DVD, Mp3, Mp4, CD, CD-R, CD-RW, JPEG-CD
Video System	AUTO / PAL / NTSC
Video Section	4:3 Letter Box and 4:3 Pan Scan, 16:9
Video Output level	1.0Vp-p +/-0.2V 75ohms
AM Tuner Section, Frequency Range	530 - 1710KHz (U.S.A.)
FM Tuner Section, Frequency Range	87.5-107.9MHz (U.S.A.)
Bluetooth	Version 4.0, Class II
Advanced Audio Distribution	OPP, OBEX, SPP, A2DP, AVRCP

